



**WOOD FRUITTICHER**

FOOD SERVICE DISTRIBUTION ∞ EST. 1913

2019

HOLIDAY  
*Specials*



**ALLOWANCES GOOD  
NOVEMBER 4 - DECEMBER 13, 2019**

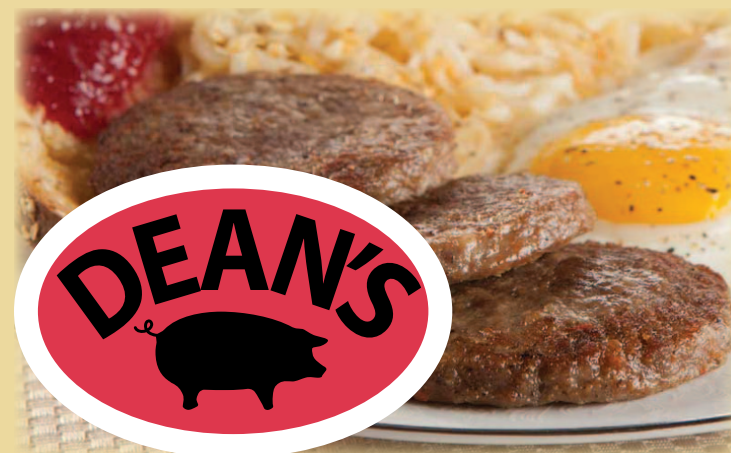
PH: 205-836-9663 | FAX: 205-836-9681  
WWW.WOODFRUITTICHER.COM  
2900 ALTON RD | BIRMINGHAM, AL 35210-4393



358671 30/5.3 oz  
**Beef Patty Homestyle**  
 387100 4/5 lb  
**Beef Taco Meat Precooked**



145698 32/13 oz  
**Icing For Breakfast Rolls** \$1.50 Off  
 322941 120/2 oz  
**Cinnamon Roll with Icing & Glaze** \$1.25 Off  
 326652 2/9 lb  
**Muffin Batter Glorious Morning** \$2.00 Off  
 326660 1/18 lb  
**Muffin Batter Cranberry Nut** \$2.00 Off



Dean's Sausage  
 319947 8/2 lb  
**Sausage Raw Ground** \$1.00 Off  
 320002 1/12 lb  
**Sausage Patty Raw 2.5 oz** \$1.00 Off  
 361279 96/2 oz  
**Sausage Patty Cooked** \$1.00 Off



**Genpak**<sup>®</sup>

568865 2/100 ct  
**Bowl Plastic Black 12oz CW012-3L** \$0.25 Off  
 568873 2/100 ct  
**Bowl Plastic Black 16oz CW016-3L** \$0.25 Off  
 568881 2/100 ct  
**Lid For Bowls CW016&CW012 BW916** \$0.25 Off  
 568907 2/100 ct  
**Bowl Plastic Black RND 24z CW024** \$0.25 Off  
 568923 2/100 ct  
**Bowl Plastic Black 32oz CW032** \$0.25 Off  
 568949 2/100 ct  
**Lid for CW024 & CW032 BWS932** \$0.25 Off



**HFA**inc.<sup>®</sup>  
 Handi-foil of America

540047 24x1000'  
**Foil Heavy Duty 24x1000'** \$0.50 Off  
 540732 1/50 ct  
**Pan Alum Stm Table Full Deep** \$0.50 Off



# General Mills

Convenience  
& Foodservice

138032	6/4.5 lb	
<b>Yellow Cake Mix</b>		<b>\$1.00 Off</b>
138065	6/6 lb	
<b>Brownie Mix</b>		<b>\$1.00 Off</b>
138768	6/5 lb	
<b>Variety Muffin Mix</b>		<b>\$1.00 Off</b>
138925	6/4.5 lb	
<b>Devils Food Cake Mix</b>		<b>\$1.00 Off</b>
139436	6/5 lb	
<b>Pillsbury Crème Cake Mix</b>		<b>\$1.00 Off</b>
320994	168/3.2 oz	
<b>Biscuit Dough Easy Split</b>		<b>\$0.50 Off</b>
321026	216/2.2 oz	
<b>Biscuit Dough Souther Style</b>		<b>\$0.50 Off</b>
321232	100/5 oz	
<b>Caramel Twirl Dough Cin roll</b>		<b>\$1.00 Off</b>
321240	100/5 oz	
<b>Dough Twirl Orange Unbaked</b>		<b>\$1.00 Off</b>
321307	200/1.5	
<b>Cinnamon Roll</b>		<b>\$1.00 Off</b>
322024	210/1.2 oz	
<b>Biscuit Dough Garlic Cheddar</b>		<b>\$0.50 Off</b>
322040	100/5 oz	
<b>Cinnamon Roll Dough Pucks</b>		<b>\$1.00 Off</b>
326017	6/3 lb	
<b>Muffin Batter Blueberry</b>		<b>\$0.50 Off</b>
326074	6/3 lb	
<b>Muffin Batter Orange Blossom</b>		<b>\$0.50 Off</b>
326140	6/3 lb	
<b>Muffin Batter Corn</b>		<b>\$0.50 Off</b>
326157	6/3 lb	
<b>Muffin Batter Ban/Nut Tube</b>		<b>\$0.50 Off</b>
326165	6/3 lb	
<b>Muffin Batter Cran/Orange</b>		<b>\$0.50 Off</b>
326173	6/3 lb	
<b>Muffin Batter Cinnamon</b>		<b>\$0.50 Off</b>
326207	6/3 lb	
<b>Muffin Batter Lemon Poppy</b>		<b>\$0.50 Off</b>
326496	6/3lb	
<b>Muffin Batter Apple Cinnamon</b>		<b>\$0.50 Off</b>
326736	6/3 lb	
<b>Muffin Batter Capp Chocolate</b>		<b>\$0.50 Off</b>
326744	6/3 lb	
<b>Muffin Batter Morning Harvest</b>		<b>\$0.50 Off</b>
326769	6/3 lb	
<b>Muffin Batter Chocolate Chip</b>		<b>\$0.50 Off</b>
326876	96/3.75	
<b>Scone Variety Sweet</b>		<b>\$0.50 Off</b>



326967	96/3.75	
<b>Scone Fruit Variety</b>		<b>\$0.50 Off</b>
342519	48/3.5 oz	
<b>Pot Pie Crust Pocket Dough</b>		<b>\$0.50 Off</b>
342527	20/14 oz	
<b>Cobbler/Pie Dough Sheet 10x12</b>		<b>\$0.50 Off</b>
343707	120/2 oz	
<b>Puff Pastry Dough Square 5x5x.1</b>		<b>\$0.50 Off</b>



321992	22 lb kit	
<b>Beef Roast Italian Sliced w/Gravy</b>		<b>\$3.00 Off</b>
322800	107/1.5 oz	
<b>Sausage Patty FastNEasy</b>		<b>\$2.00 Off</b>
322933	80/2 oz	
<b>Sausage Patty Fully Cooked Breakfast</b>		<b>\$3.00 Off</b>
340661	2/7 lb	
<b>Beef Brisket Smoked Sliced Austin</b>		<b>\$4.00 Off</b>
352070	1/15lb	
<b>Bacon Hormel 15-19 Ct</b>		<b>\$2.00 Off</b>
352088	12/1 pc	
<b>Pork Rib Cooked St Louis</b>		<b>\$4.00 Off</b>
359224	6/2 lb	
<b>Ham Sliced Sand Hormel</b>		<b>\$3.00 Off</b>
359281	6/2 lb	
<b>Turkey Sliced Hormel</b>		<b>\$3.00 Off</b>
359430	2/3.25 lb	
<b>Bacon Cooked 18/22 BACON 1</b>		<b>\$4.00 Off</b>
364729	48/3 oz	
<b>Chicken Breast Fire Braised</b>		<b>\$3.00 Off</b>
364810	2/5 lb	
<b>Chicken Thigh Boneless Braised Cooked</b>		<b>\$3.00 Off</b>
366179	1/10 lb	
<b>Pizza Topping Pepperoni 16 ct</b>		<b>\$2.00 Off</b>
899971	2/5-6 lb	
<b>Beef Pot Roast Pulled Natural Choice</b>		<b>\$4.00 Off</b>
00050	1/14 lb	
<b>Beef Pot Roast Cooked Choice</b>		<b>\$2.00 Off</b>



# KEN'S



611103 4/65 oz  
**Kogi Secret Weapon Sauce**



**Kellogg's**  
Specialty Channels

11791	60 ct/1.37	
<b>Pringles Assorted Pack</b>		<b>\$0.75 Off</b>
14969	300/2 pk	
<b>Crackers Club Captains Style</b>		<b>\$1.00 Off</b>
17814	1/10 lb	
<b>Crackers Saltines Zesta</b>		<b>\$1.00 Off</b>
20230	24/9	
<b>Pie Shell Graham</b>		<b>\$1.00 Off</b>
21006	30/4 oz	
<b>Crackers Town House in Tubes</b>		<b>\$0.75 Off</b>
349522	48/4oz	
<b>Vegan Burger Meat Lovers</b>		<b>\$2.00 Off</b>
395582	48/3.25 oz	
<b>Burger Black Bean Spicy</b>		<b>\$2.00 Off</b>



# Leahy/IFP

163261	200/1 oz	
<b>Syrup Pancake Sugar Free</b>		<b>\$2.00 Off</b>
163287	12/13 oz	
<b>Syrup Pancake Sugar Free</b>		<b>\$2.00 Off</b>
163402	18/2.5 oz	
<b>Gelatin Assorted Red Sugar Free</b>		<b>\$1.50 Off</b>
163428	18/2.5 oz	
<b>Gelatin Assorted Citrus Sugar Free</b>		<b>\$1.50 Off</b>
219303	12/46 oz	
<b>Juice White Grape 100%</b>		<b>\$1.00 Off</b>
219311	12/46 oz	
<b>Cranberry Juice</b>		<b>\$1.00 Off</b>
219329	12/46 oz	
<b>Grape Juice 100%</b>		<b>\$1.00 Off</b>
219337	12/46 oz	
<b>Prune Juice 100%</b>		<b>\$1.00 Off</b>
219410	12/46 oz	
<b>Apple Juice</b>		<b>\$1.00 Off</b>
219642	12/25 oz	
<b>Apple Juice Base 100%</b>		<b>\$2.50 Off</b>
219667	12/25 oz	
<b>Apple Juice Base 30%</b>		<b>\$1.00 Off</b>
220640	12/25 oz	
<b>Cranberry Juice Base 100%</b>		<b>\$1.00 Off</b>
220665	12/25 oz	
<b>Cranberry Juice Base Cocktail</b>		<b>\$1.00 Off</b>
221242	12/25 oz	
<b>Grape Juice Base 100%</b>		<b>\$1.00 Off</b>
221267	12/25 oz	
<b>Grape Juice Base 35%</b>		<b>\$1.00 Off</b>
221911	12/25 oz	
<b>Fruit Punch Juice Base 100%</b>		<b>\$1.00 Off</b>
222281	12/46 oz	
<b>Pineapple Juice 100%</b>		<b>\$1.00 Off</b>
222950	12/25 oz	
<b>Prune Juice Base 100%</b>		<b>\$1.00 Off</b>
225128	12/46 oz	
<b>Orange Juice Ascep 100%</b>		<b>\$1.00 Off</b>
225177	12/25 oz	
<b>Orange Juice Base 100% Juice</b>		<b>\$1.00 Off</b>
225268	12/25 oz	
<b>Orange Juice Base 50%</b>		<b>\$1.00 Off</b>



# RED GOLD

QUALITY  
SINCE 1942

226324	12/46 oz	
<b>Tomato Juice</b>		
524934	264/1.5 oz	
<b>Salsa Dipping Cup</b>		
610790	6/10 lb	
<b>Sauce Marinara Red Gold</b>		
652107	6/10 lb	
<b>Zucchini &amp; Tomatoes Redpak</b>		
658971	6/10 lb	
<b>Ketchup Jug w/ Pump Plastic</b>		
659094	6/10 lb	
<b>Ketchup Red Gold 33% Fancy Sweet</b>		
659144	1/3 gal	
<b>Ketchup Natural with Sugar</b>		
659169	6/10 lb	
<b>Ketchup Red Gold 33% Fancy</b>		
659805	6/10 lb	
<b>Ketchup Citation</b>		
659821	16/20 oz	
<b>Ketchup Red Gold Squeeze Bottle</b>		
660175	1/1000	
<b>Ketchup Red Gold 9gram</b>		
660282	1/3 Gal	
<b>Ketchup Red Gold 33% Fancy</b>		
660373	1/1 ct	
<b>Dispenser for 3 gal. Ketchup</b>		
660423	6/10 lb	
<b>Chili Sauce (Tin)</b>		
660910	6/10 lb	
<b>Tomato Paste</b>		
661652	6/10 lb	
<b>Tomato Puree 1.06sp/gravity</b>		
662411	6/10 lb	
<b>Tomato Sauce</b>		
662494	12/28 oz	
<b>Diced Tomatoes &amp; Green Chiles</b>		
662957	6/10 lb	
<b>Tomatoes Whole Peeled Standard</b>		
663500	6/10 lb	
<b>Tomatoes Petite Diced 3/8 juice</b>		
663542	6/10 lb	
<b>Tomatoes Stewed RedPack</b>		



352963 4/5 lb  
**Gravy Sausage Fully Cooked**



364257 4/4.5 lb  
**Casserole Sweet Potato w Pecans**

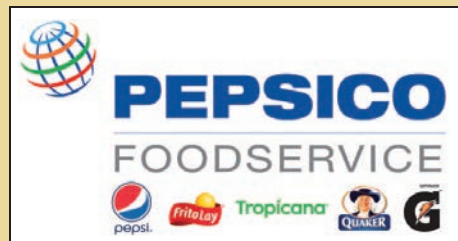


- |  |        |                   |
|--|--------|-------------------|
| 316604                                 | 2/5 lb |                   |
| <b>Cheese Curds Breaded</b>            |        | <b>\$1.00 Off</b> |
| 316612                                 | 2/5 lb |                   |
| <b>Cheese Curds Breaded Spicy</b>      |        | <b>\$1.00 Off</b> |
| 409680                                 | 6/4 lb |                   |
| <b>Fry Wedge Dip'N V-Shaped Scoop</b>  |        | <b>\$1.00 Off</b> |
| 409748                                 | 6/5 lb |                   |
| <b>Fry 3/8 Hvy Batter Incredicrisp</b> |        | <b>\$0.50 Off</b> |
| 410738                                 | 6/5 lb |                   |
| <b>Fry 3/8 FlavorLast PXLCF03788</b>   |        | <b>\$0.50 Off</b> |



# MICHAEL FOODS<sup>INC.</sup>

758706 4/6 lb  
**Potato Mashed Creamy Delux**



13151 24/2.87 oz  
**Chips Doritos Nacho Cheese**

**\$2.00 Off**



- |                                      |           |                   |
|--------------------------------------|-----------|-------------------|
| 368043                               | 24/5.2 oz |                   |
| <b>Pizza Crust Cauliflower</b>       |           | <b>\$1.00 Off</b> |
| 414870                               | 12/16 oz  |                   |
| <b>Topping Whipped U Squeeze Bag</b> |           | <b>\$1.00 Off</b> |
| 414896                               | 6/16 oz   |                   |
| <b>Topping On Top Chocolate</b>      |           | <b>\$1.00 Off</b> |



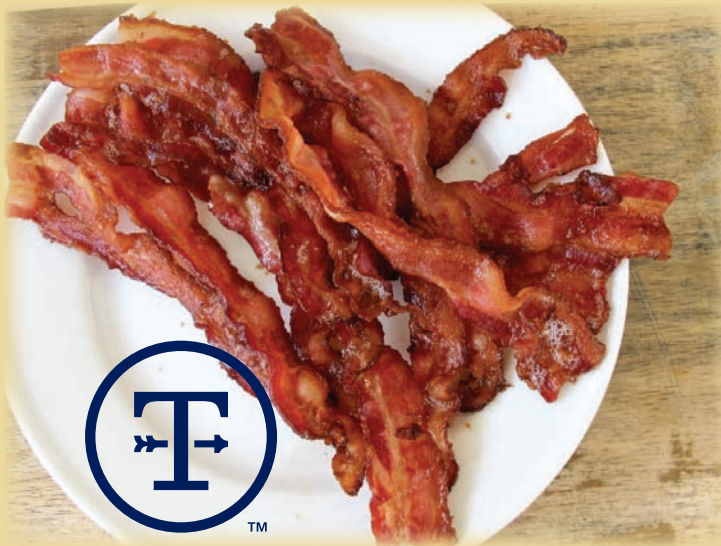
# Smithfield®

## CULINARY

CREATING MENU INSPIRATION



- 358721 2/5lb  
**Pork Pulled Smoked No Sauce**
- 360057 2-14/16 lb  
**Ham Pit**
- 365866 1/10 lb  
**Sausage Rope Farmland 130530**
- 366435 2/10 lb  
**Ham Applewood Smoked Carvemstr**
- 366468 2/9-11 lb  
**Ham Smoked Flat**



# Tyson

- 350090 1/15 lb  
**Bacon 14/18 ct Natural Hickory** **\$2.00 Off**
- 351767 1/15 lb  
**Bacon Applewood Smoked 14-18ct** **\$2.00 Off**
- 353169 1/11 lb  
**Sausage Beef Rope Smoked** **\$2.00 Off**
- 360347 1/15lb  
**Pork Roast Cooked Hillshire** **\$2.00 Off**
- 361626 1/10 lb  
**Sausage Smoked 4/1** **\$2.00 Off**
- 364471 24/4.5oz  
**Croissant Sausage Egg Cheese** **\$2.00 Off**



# KRUSTEAZ®

- 607523 192/1.3 oz  
**Flat Bottom Waffle Buttermilk Square**
- 607549 132/1.7 oz  
**Flat Bottom Waffle Maple Round**



- 343004 4/80 oz  
**Apple cobbler**
- 343202 4/80 oz  
**Peach cobbler**
- 343194 4/96 oz  
**Peach cobbler**
- 343210 4/96 oz  
**Blackberry cobbler**
- 343318 4/96 oz  
**Apple cobbler**
- 334276 2/74 oz  
**Reese's Chocolate Peanut Butter Cake**
- 331967 4/44 oz  
**Lemon Lover bar**
- 593632 2/60 oz  
**Tuxedo cheesecake**



# GET **FREE** TABLETOP PRODUCTS AND CADDIES

Fried Egg Burger with Frank's RedHot®  
Original Cayenne Pepper Sauce



## THEY'LL APPRECIATE THE BRANDS. YOU'LL APPRECIATE THE SAVINGS.

### Frank's RedHot® Original Cayenne Pepper Sauce

- America's #1 hot sauce brand<sup>1</sup>
- Delivers *The Perfect Blend of Flavor and Heat*® to any meal
- It's the #1 choice of your patrons<sup>1</sup>—put what they want on your tables!

### French's® Classic Yellow® Mustard

- America's #1 Mustard brand<sup>1</sup>
- Made with #1 grade, stone-ground mustard seed

### French's® Tomato Ketchup

- No high fructose corn syrup
- Non-GMO Project Verified\*

### McCormick® Sea Salt and Black Peppercorn Grinders

- Attractive disposable glass bottle
- Eliminates the labor to refill
- Using the adjustable grinder at the table brings out the full flavor



**43% of consumers** say the ability to customize a meal is important,<sup>2</sup> and having these on your table does just that!

Frank's RedHot® is the **#1 brand** with Gen Z, Millennials and Gen X (consumers 18-45)<sup>3</sup>

Offer valid on purchases from January 1, 2019–December 31, 2019. Restrictions apply; please see rebate details, terms, and conditions on back.

\*All French's® Tomato Ketchup products are Non-GMO with the exception of the 2/15 gallon pouch. | <sup>1</sup>IRI, MULO, L52 w/e 10/28/18—Based on dollar sales. | <sup>2</sup>Nielsen Syndicated—L52 w/e 7/15/17—Based on dollar percent change vs. year ago among brands with at least 5.0% ACV in Total US xAOC. | <sup>3</sup>2016 Generational Consumer Trend Report, Technomic, Inc. | ©2019 McCormick & Company, Inc.





**PACTIV**  
Advanced Packaging Solutions



**PACTIV CORPORATION**

- 539049 1/100 ct  
**Container Aluminum w/Lid 16oz**
- 539056 1/50 ct  
**Container Aluminum w/Lid 46 oz**
- 547828 1/100 ct  
**Showcase Cake 1/2 Round 7104-9**
- 548479 1/90 ct  
**Showcase Cake 9 Rnd Deep 7109-9**
- 548503 1/50 ct  
**Cake Showcase 10 Deep 9510SKHU**
- 548511 1/100 ct  
**Cake Showcase Dome and Base**
- 553404 1/1250 ct  
**Bowl Foam 5oz White with lip**
- 554006 1/375 ct  
**Tray Clear 5x5 Hinged Lid**
- 554014 1/1000 ct  
**Bowl Foam 12 oz White with lip**
- 565416 1/300 ct  
**Tray 4 Cup Carrier Molded Fiber**
- 567719 1/500 ct  
**Tray Clear 6 1comp Hingd 2656**
- 567776 1/500 ct  
**Tray Nacho 2comp clear 6x8x1.75**
- 567875 1/500 ct  
**Tray 5 Comp School Fiber Compos**
- 568006 1/150 ct  
**Tray Hinged Lg 1comp White**
- 568147 1/500 ct  
**Tray Hngd Med(Sm) Sandwich 22400**
- 568303 1/500 ct  
**Tray Hinged Foam Hot Dog**
- 568352 1/500 ct  
**Tray Pie Wedge Clear HL C189019**
- 568469 1/150 ct  
**Tray Hinged Medium 3 Comp White**
- 568642 1/150 ct  
**Tray Hinged Large 3 Comp White**
- 568774 1/240 ct  
**Container 8oz Clear w/lid combo**
- 568782 1/240 ct  
**Container 16oz Clear w/lid combo**
- 568790 1/240 ct  
**Container 32oz Clear w/lid combo**
- 572636 18X2000  
**Film 18x2000'slide Cutter 914SC**
- 580704 1/200 ct  
**Tray HL Clr 1comp Medium C181120**
- 580787 1/250 ct  
**Tray Hot Dog Clear Plastic**



**J.M.  
EXOTIC  
FOODS**

- 620104 12/6 oz  
**Gumbo Seasoning**
- 740985 12/6.4 oz  
**Dressing Mix Ranch No MSG**



**WOOD FARMS**

- 509356 4/1 gal  
**Blue Cheese Dressing**
- 513101 4/1 gal  
**Ranch Buttermilk Dressing**
- 600650 4/1 gal  
**BBQ Western Sauce**
- 533208 4/1 gal  
**Honey Mustard Dressing**



- 352138 1/30 lb  
**Thick Platter Bacon**





143628 3/10 lb  
**Pie Filling Apple**  
143651 3/10 lb  
**Pie Filling Blueberry**  
143719 3/10 lb  
**Pie Filling Cherry**  
143727 3/10 lb  
**Pie Filling Peach**  
143990 6/10 lb  
**Pie Filling Blackberry Cobbler**  
144501 6/10 lb  
**Strawberry Glaze**  
145888 1/19 lb  
**Strawberry Glaze**  
147199 6/112 oz  
**Apples Country Heat & Serve**  
147207 6/10 lb  
**Apples Sliced in Syrup**  
147314 6/10 lb  
**Apples Sliced Unsweetened**  
148205 3/10 lb  
Apples Baked Whole  
149807 6/10 lb  
**Cherries RTP Red Tart Pitted**  
158097 96/4.5 oz  
**Apple Sauce Cups Unsweetened**  
158105 72/4 oz  
**Apple Sauce Natural**  
162818 6/104 oz  
**Applesauce Unsweetened Natural**  
162826 6/10 lb  
**Apple Sauce Original**  
162834 6/10 lb  
**Apple Sauce Unsweetened**  
213793 3/10 lb  
**Pudding Banana Trans Fat Free**  
213801 6/10 lb  
**Pudding Butterscotch**  
213900 6/10 lb  
**Pudding Chocolate Splenda**  
213918 6/10 lb  
**Pudding Vanilla Splenda**  
214007 6/10 lb  
**Pudding Chocolate Milk**  
214023 6/10 lb  
**Pudding Chocolate**  
214205 6/10 lb  
**Pudding Lemon Trans Fat Free**

214395 6/10 lb  
**Pudding Vanilla**  
214403 6/10 lb  
**Pudding Vanilla TFF/PHO Free**  
521732 6/106 oz  
**Cheese Sauce Aged Cheddar**  
521757 6/10 lb  
**Cheese Sauce Nacho**  
663906 4/128 oz  
**Vinegar Apple Cider**



NESTLÉ - STOUFFER'S

342402 12/11.5 oz

**Pot Pie Chicken Stouffers**

344051 4/90 oz

**Broccoli Cheese Rice Casserole**

45793 4/95 oz

**Chicken & Dumplings Entree**

345900 4/76 oz

**Cheese Bacon Potato Bake**

345926 4/64 oz

**Sauce Beurre Blanc**

345934 4/94 oz

**Lasagna with Sausage Entree**

345959 4/76 oz

**Potatoes Au Gratin Casserole**

345967 4/96 oz

**Sauce Alfredo Heavy Gluten Free**

345975 4/76 oz

**Potatos Scalloped Casserole**

345983 4/80 oz

**Alfredo Sauce Pouch Gluten Free**

345991 4/94 oz

**Broccoli Au Gratin**

346015 4/70 oz

**Green Bean Casserole by Stouffe**

346106 4/64 oz

**Dip Spinach Artichoke Pouch**

346189 4/64oz

**Mac & Cheese White Cheddar**

346205 4/72 oz

**Corn Pudding Souffle Casserole**

346304 4/6 lb

**Lasagna with Meat Sauce**

346312 4/76 oz

**Macaroni & Beef with Tomatoes**

346320 4/76 oz

**Macaroni & Cheese Stouffers**

346338 4/98 oz

**Macaroni & Cheese Deep Dish**

346353 4/ lb

**Casserole Yams & Apples**

346411 4/76 oz

**Escalloped Chicken & Noodles**

346429 4/72 oz

**Beef Stew Entree by Stouffer**

346437 4/62 oz

**Swedish Meatballs with Gravy**

346494 4/73 oz

**Chicken Fettucini Grilled**



346502 4/58 oz

**Meatloaf with Gravy by Stouffer**

346627 4/72 oz

**Salisbury Steak with Gravy**

346726 4/83 oz

**Stuffed Green Peppers**

346809 4/96 oz

**Lasagna Vegetable**

347005 4/72 oz

**Entree Green Pepper Steak**

# Save up to \$8 per case on Pillsbury™ Biscuits!

SEPTEMBER 1, 2019 – NOVEMBER 30, 2019

**100 cases/\$800 maximum after rebate**



## Eligible Products

### Code Product Description

#### *Pillsbury™ Frozen Biscuit Dough*

10094562063310	Garlic & Cheddar 1.2 oz, 2.25"
10094562063327	Butter Tastin' 2.2 oz, 2.75"
10094562062405	Buttermilk 2.2 oz, 2.75"
10094562062412	Buttermilk 2.6 oz, 3.25"
10094562062634	Mini Southern Style 1.2 oz, 2.25"
10094562062528	Southern Style (216 ct) 2.2 oz, 2.75"
10094562062504	Southern Style (120 ct) 2.2 oz
10094562311510	Southern Style Reduced Sodium 2.2 oz, 2.75"
10094562062542	Large Southern Style 4.5 oz, 3.25"
10094562063464	Southern Style Easy Split™ 2.2 oz, 2.75"
10094562315242	Southern Style Easy Split™ 2.2 oz, 2.75" OTF
10094562107526	Southern Style Easy Split™ 2.51oz , 2.75"
10094562062498	Southern Style Easy Split™ 3.17 oz, 3.25"
10094562108332	Large Southern Style Easy Split™ 4.5oz, 3.25"
10094562322691	Mini Whole Grain (210 ct) 1.25oz, 2.25"
10094562322684	Whole Grain Easy Split™ 216 ct 2.51 oz
10094562322677	Whole Grain 216 ct 2.51 oz, 2.75"

### Code Product Description

#### *Pillsbury™ Frozen Baked Biscuits*

10094562062320	Mini Buttermilk 1.2 oz 2.25"
10094562062832	Buttermilk 2.0 oz, 2.875"
10094562062344	Mini Golden Buttermilk 1.0 oz, 2.25"
10094562062351	Golden Buttermilk 2.25 oz, 2.875"
10094562062368	Golden Buttermilk Easy Split™ 2.25 oz, 2.875"
10094562323919	Golden Buttermilk Easy Split™ Reduced Sodium 2.2
10094562062375	Golden Buttermilk Easy Split™ 2.85 oz, 3.25"
10094562062337	Mini Southern Style 1.2 oz, 2.25"
10094562062856	Southern Style 2.0 oz, 2.875"
10094562105324	Southern Style Easy Split™ 2.85 oz, 3.25"
10094562324992	Southern Style Easy Split™ 3.4 oz, 3.75"
10094562322721	Mini Whole Grain-Rich 1.0 oz, 2.25"
10094562322714	Whole Grain-Rich Easy Split™ 2.0 oz, 2.875"